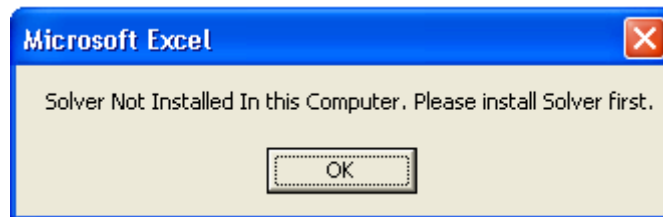


## Loading the Solver into Excel

As a system requirement of the CCaLC Optimisation Tool, the SOLVER should be loaded in Excel and the VBA project. On opening, the Optimisation Tool checks automatically if the Solver is loaded properly.


If the Solver application file (SOLVER.xla for Excel 2003 and SOLVER.xlam for Excel 2007) has not been installed, the following message is shown. In that case, please install the Solver add-in before using the Optimisation Tool. Otherwise, the tool will not work.



### Loading the Solver in Excel 2003

1. Open Microsoft Office Excel 2003.
2. Click the Tools on the top menu.
3. Click Add-Ins.
4. If Solver Add-In is not listed, use Browse... to locate 'SOLVER.xla' in the application file (e.g. C:\Program Files\Microsoft Office\OFFICE11\ Library\ SOLVER\ SOLVER.xla)
5. Check the box for Solver Add-In.
6. Click OK.
7. If prompted that Solver is not installed, click 'Yes' to install. Insert a CD with Microsoft Office installation files as prompted.

### Loading the Solver in Excel 2007

1. Open Microsoft Office Excel 2007.
2. Click the Office Button .
3. Click Excel Options (bottom right.)
4. Click Add-Ins.
5. Click Go (bottom middle).
6. Check the box for Solver Add-In and follow the instruction.
7. If Solver Add-In is not listed, use Browse... to locate 'SOLVER.xlam' in the application file (e.g. C:\Program Files\Microsoft Office\ OFFICE12\ Library\ SOLVER\ SOLVER.xlam)
8. Click OK.
9. If prompted that Solver is not installed, click 'Yes' to install. Insert a CD with Microsoft Office installation files as prompted.